



Waddesdon Manor, Buckinghamshire

Wednesday 10 June 2026

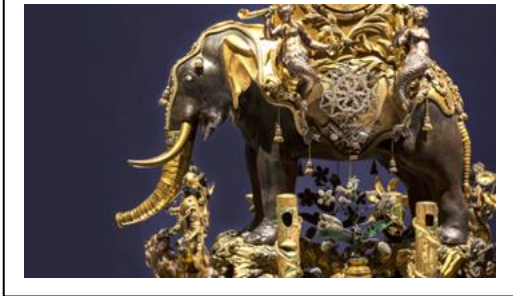
Leaving by coach at 08.00 hrs from Tesco's in Rustington,
Leaving Waddesdon Manor at 16.15 hrs

Cost (inc. driver's tip)

£52

£41 (with RHS card)

£30 (with NT or Art Fund card)



Created in 1877-1883 by Baron Ferdinand de Rothschild, the French inspired chateau was built for beauty, for a collection, and for entertaining, a summer abode to get away from the city.

Treasures: Over 300 remarkable objects, from glittering jewels to fine silver, dating from 100AD to the 20th Century.

Some of the most priced items in the collection:

- Musical elephant automaton (1774) – not to be missed!
- Meissen Nanny Goat with Suckling Kid (1732-34)
- *Porca Miseria* by Ingo Mayrer (2003) – an astonishing chandelier, made of broken porcelain and cutlery
- Chest of drawers (1778) - supplied to Madame Elisabeth (the youngest sister of Louis XVI) when, at the age of 14, she was granted her own suite of apartments at Versailles

Optional garden tour - £8 Time to be decided – 2pm?

Discover seasonal flowers, the Parterre, North Front, Aviary, Rose Garden, with an introduction to the House.

Landscape designer Elie Lainé created the gardens with an aviary, farmstead, kitchen gardens, and glasshouses



Art across the estate

From 18-century statues, contemporary sculpture to award winning architecture, art can be seen across the Waddesdon estate.

Food and drink: Spoilt for choice. The Manor Restaurant, the Stables café and Courtyard Coffee. You will be able to book lunch or afternoon teas in advance. See menu on the website and on the notice board. Alternatively, just bring your own.