



Watts Gallery and Artists' Village

Tuesday 4 June 2024

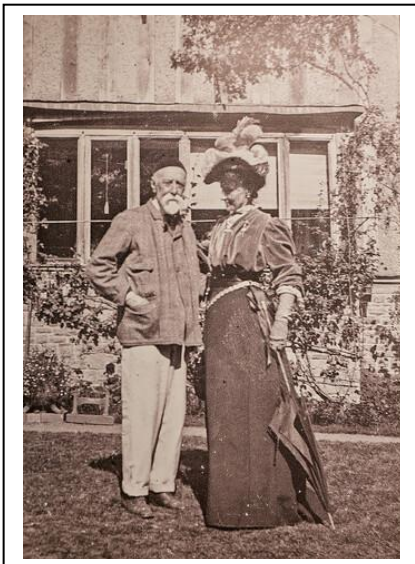
Cost £39 inc. coffee on arrival & driver's tip



'We are delighted to announce that the Watts Gallery – Artists' Village is now recognised under the Arts Council's UK Museum Accreditation Scheme. We have been accredited for excelling in the fundamental requirements of a museum, such as the management of our collection, our engagement with visitors and our governance.

From the website

Founded in 1904 as the only gallery in the UK devoted to a single artist, Watts Gallery – Artists' Village offers a unique insight into the life and work of 'England's Michelangelo' George Frederic Watts and the designer and artist Mary Watts.



Discover more about the historic Arts & Crafts architecture, visit the Sculpture Gallery, Watts Contemporary Gallery, the stunningly decorated Memorial Chapel, and Limnerslease, the Grade II listed Arts & Crafts home of George and Mary, completed by Sir Ernest George in 1891.

Uncover the life of the renowned artist George Frederick Watts through his own remarkable paintings and sculptures.

Our lecture on 16 April 2024 by Dr Anne Anderson is dedicated to The Artists' Village, the legacy of George Watts and his wife Mary Watts. Which tour we will commit to, will be decided after the lecture. Be assured that all buildings are accessible even if you do not visit them on your tour.

Group visitors get a 10% discount in the shop.