

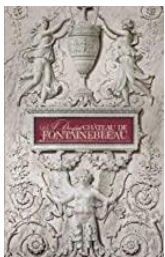
Dear Members,

Meeting on Tuesday 15 February 2022 – 10.30 hrs. Doors open at 09.45 hrs

Woodlands Centre – this month's meeting will be back at Woodlands. We would appreciate it if you could take sensible precautions: wear a mask and take a lateral test if possible and respect other people's space.

We will once again be serving coffee and tea. As we are having the New Members' Welcome Party after the lecture, it would help us very much if you could return your empty cups to the kitchen before the lecture.

Raffle: For £1 only this book could be yours.



***A Day at Chateau de Fontainebleau* by Guillaume Picon**

Imbued with over eight centuries of history, A Day at Château de Fontainebleau offers unique historical insight into the lives of over thirty-four French sovereigns who inhabited and enhanced this great architectural monument.

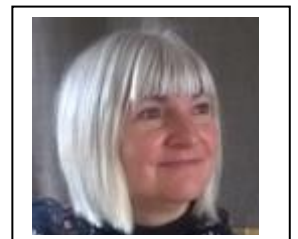
February's Lecture: *The Collections of Napoleon and Josephine at Chateau de Malmaison* by Carol Petipher

The Chateau de Malmaison (the 'evil house'), situated outside Paris, was bought by



Josephine in 1799. After returning from war, Napoleon approved of the mansion and for 2 years, along with the Tuileries, it became the seat of the French Government and the place where the couple entertained and built up their collection of art. In 1905 the chateau was turned into a museum showcasing their lives and character.

Our speaker, Carol Petipher, having lived in France, uses art in all its guises to explore the characters who shaped France.



This will be another lecture worth attending. Wouldn't it be nice if we could follow up with a visit? This will remain a dream for the time being.

New Members' Welcome Party

After our lecture the Committee will at long last be able to welcome our new members, not only those who have joined us recently, but also those who joined during lockdown. We look forward to meeting you. While we all enjoy a glass of wine, we can tell you more about our Society, what we do and have planned for the future. We would also like your views and

thoughts. If you are a new member and have not yet signed up for our informal get-together, do contact us (arun@theartsociety.org)

Events to come

Several of our members enjoyed the lecture by Simon Gillespie, the art restorer, at Champs Hill. We will be back at Champs Hill on 19 May 22 for the **Late Newlyn Exhibition** and a chance to wander round the spectacular gardens. Tickets for this self-drive event will go on sale in March 22.

The following tickets will be on sale on 15 February 22 at Woodlands



A tour of Christ's Hospital, one of the oldest boarding schools in England. (A school like no other.)

Thursday 24 March 2022 at 12.45 – 4.30 pm Cost £25

This is a self-drive visit. (Christ's Hospital, Horsham, RH13 0LJ)

You can find a link on the website to their brochure. The school offers a full programme: The School Band will perform, followed by a guided tour of the school and afternoon tea in the magnificent Dining Hall. Then another tour and talk at the on-site museum where you will learn more about the history of the school. Warning: wear comfortable shoes as this visit involves much walking.

You can buy your ticket at the meetings in Woodlands on 15 February and 15 March 22. If you have booked online, do pick up your ticket at the meeting. However, as long as you have paid, your name will be on my list and I won't ask for your ticket, this is just for you as a reminder. The booking form for this visit is on the website and has all the details you need. Places are limited so make sure you book in time.



A Tour of the Royal Albert Hall, followed by an optional Tour of Kensington Palace

Thursday 12 May 2022 – Coach departure from Woodlands at 08.30 am

Royal Albert Hall only: £35 / including Kensington Palace £49

During a guided tour of the Royal Albert Hall you will learn about its history and see for yourselves what goes on underground.

In Kensington Palace you will find the latest exhibition of personal and official royal photographs to honour the Queen's Platinum Anniversary. Any work on the State Rooms should be finished by May.

This visit was cancelled in 2019 but has now been revived. It will be our first coach trip since our visit to Windsor Castle in 2019! It is time to move forward. A coach trip should not only be safer and more relaxed than travelling by train, it is also a cheaper mode of transport. Virtually door to door, for less than even a senior concession return. (I've done the sums!)

If you cannot make it to our meetings, the booking forms can be found on the website. (theartssocietyarun.org)

HOT OFF THE PRESS!!

We have been fortunate in securing another visit to Philip Jackson's Studio in Midhurst. Those who have been before, were enthralled by his work and his talk about his experiences. Philip himself suggested for us to come at the end of June as his garden is at its best. Not only will we hear his talk, see his work in progress, we can also visit his garden. We will start selling tickets for this event on 19 April 22. We have limited places and these tickets always sell like the proverbial hot cakes.

Morning visit to Philip Jackson's Sculpture Studio and Gallery

Wednesday 22 June 2022

Cost £25 pp

March 2022

There will not be a newsletter in March. I am off to Australia for a month to visit my family, pending negative PCR tests, Locator and Exemption forms and friendly Australian Customs. Travel has never been so complicated. You will receive a reminder prior to the meeting on 15 March 22, which will also be at Woodlands.

Coffees will be served, most committee members will be there and we have another exciting Speaker and Lecture for you. The usual precautions apply.

The Georgian Jewel – a window opening onto a forgotten world. Our Speaker is John Benjamin, a well-known expert from the Antiques Roadshow. Details are in your programme and on the website.

[The following tickets will be on sale on 15 March 22 at Woodlands](#)

Christ's Hospital – if any tickets are left (see above)

Royal Albert Hall tour (coach trip) with optional tickets for Kensington Palace (see above)

Champs Hill – Late Newlyn Exhibition - 19 May 22 – arrival 10.15 am for coffee at 10.30 am. Also an opportunity to wander round the colourful gardens and the woodlands, and admire the various sculptures set in these lovely surroundings.

I hope to see many of you next week. Keep safe and warm. Hopefully spring will have arrived by the time I see you again in April. My tan will have gone by then

Miek Bell
Chair